

Project:

Date:

PRODUCT DATASHEET

Last information update: January 2021

series:

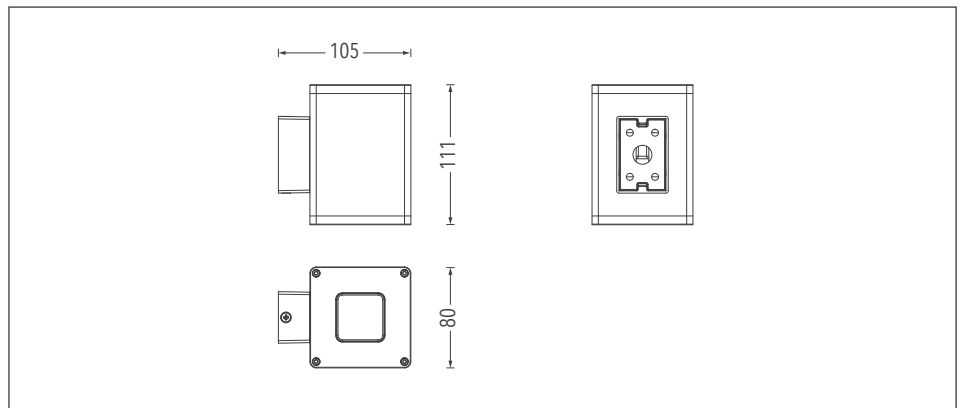
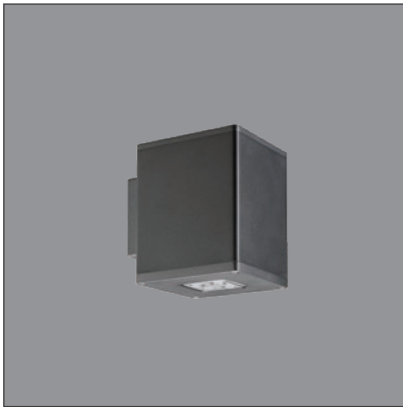
NIKO DOWN LIGHT

WALL MOUNTED LUMINAIRE
1x8W 630LM ON/OFF

2016W8. [] . [] . [] + []
accessories
finish color
color temperature
optics



Example of complete order code: 2016W8.0008.2780.03+ACCESSORY



Description

Wall mounted LED luminaire for outdoor installation that delivers light downward. Body is made of powder coated aluminum, safety cover is made of tempered glass, lens is made of polycarbonate, and all external screws used are made of stainless steel, the luminaire with a high level of weather and UV ray resistance. Symmetrical light distribution, spot / narrow / medium / oval optics. Light color white, On/off control. Power supply is not included. Safety class III.

Installation

Wall mounted with installation plate.

Luminaire weight

0.6 Kg

Optics

8° [0008]	15° [0015]	30° [0030]	10°x40° [1040]

Color temperature

2700K [2780]	3000K [3080]	4000K [4080]
-------------------	-------------------	-------------------

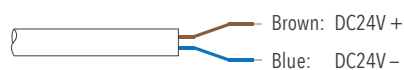
Finish color

Black [03]	Customized [RAL]
-----------------	-----------------------

TECHNICAL DATA

Power	1x8W
Input voltage	24V DC
Safety class	III
Luminous flux	630 lm \pm 5%
CCT	2700K, 3000K, 4000K
CRI	80 Ra
Light distribution type	Symmetrical
Optics	8°, 15°, 30°, 10°x40°
Light source	Osram
MacAdam Step	5
Number of LEDs	4
Power supply	Not included (constant voltage power supply ordered separately)
Control	ON/OFF
IP rating	IP66
Impact resistance	IK07
Ambient temperature	-20°C ~ +50°C
Storage temperature	-40°C ~ +70°C
Material	Body in aluminum, cover in tempered glass, optical lens in polycarbonate
Finish	Powder coated, black as standard color
Lifetime	50,000 hours Ta=40°C

WIRING



1x Power input cable, 2-core, open end, L=300mm

ACCESSORIES
